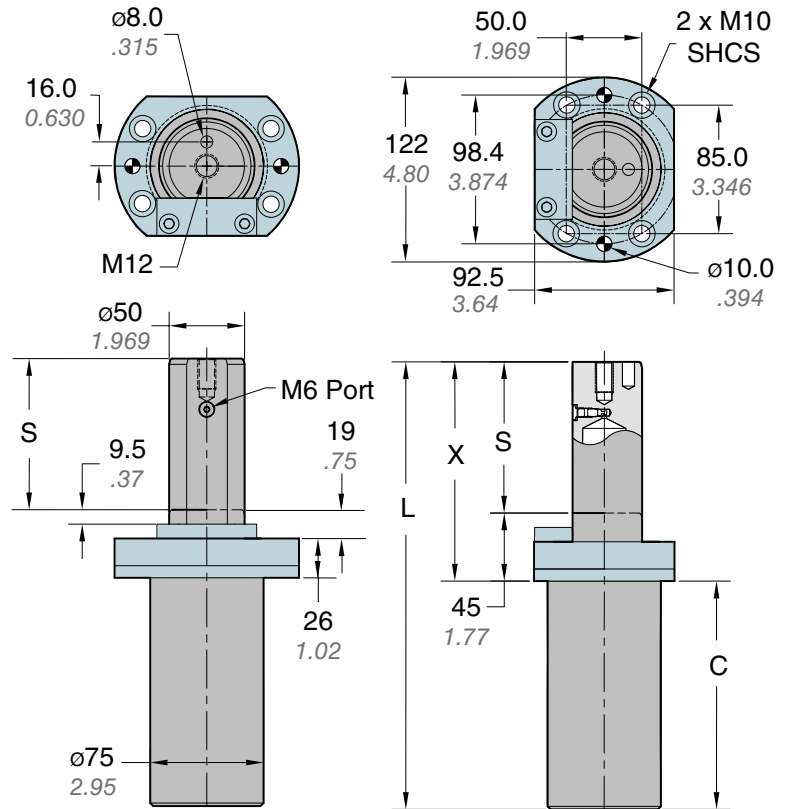


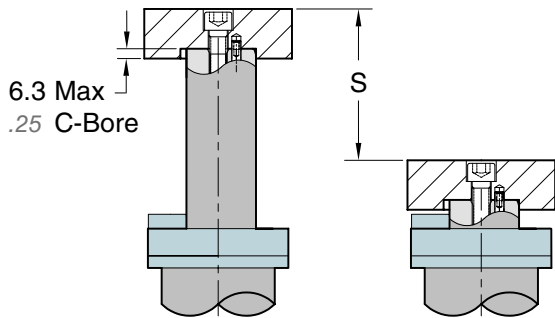


Decrease die construction costs with DADCO's Non-Rotating Nitrogen Gas Lifter

- Non-rotating construction eliminates need for additional guidance components
- Extended Guide Rod bushings provide increased stability
- Inverted gas spring is housed inside the keyed Guide Rod to provide reliable and adjustable lifting force



Part No.	S mm inch	C	X	L
SLN.300.050	50 1.97	101 3.98	95 3.740	196 7.717
SLN.300.080	80 3.15	131 5.16	125 4.921	256 10.079
SLN.300.100	100 3.94	151 5.94	145 5.709	296 11.654
SLN.300.125	125 4.92	176 6.93	170 6.693	346 13.622
SLN.300.150	150 5.91	201 7.91	195 7.677	396 15.591



Rod Extension Detail
Guide rod has a small extension for ease of attaching lifting structure.

Ordering Example:

SLN.300.050. B33. 150

Part Number: _____
Includes Series, Model and Stroke Length
Mount Option: _____
B33 = Keyed Narrow Flange Mount

Charging Pressure:
20-150 bar (250-2175 psi). *When not specified, default is 150 bar.*

Operating Specifications

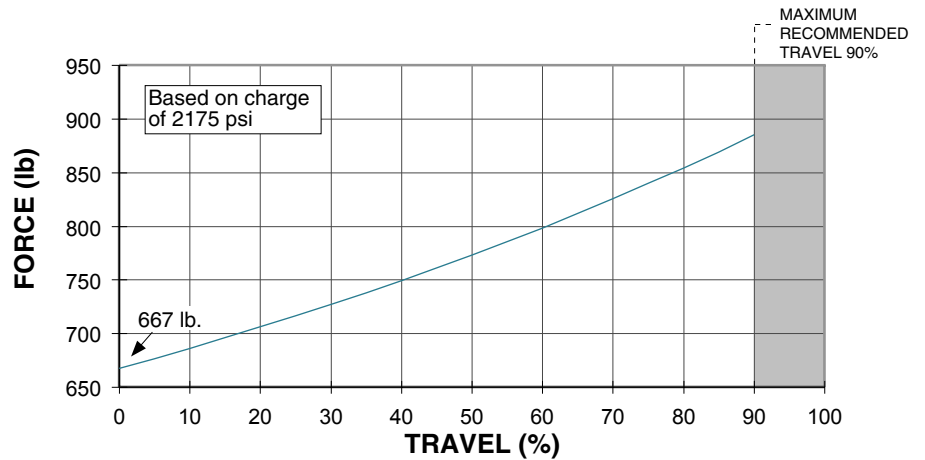
Charging Medium:	Nitrogen Gas
Charging Pressure Range:	20-150 bar (250 psi - 2175 psi)
Operating Temperature:	-6°C - 71°C (20°F - 160°F)
Maximum Speed:	35 m/min (23 in/sec)
Angular Accuracy*:	90° ± 1° from the narrow axis of the mount

DO NOT EXCEED 90% OF STROKE

*Accuracy is dependent upon the key being properly installed with a .13 mm (.005") shim.

On-Contact Force

psi <i>charging pressure</i>	lb. <i>theoretical lifting force</i>
250	77
500	153
750	230
1000	307
1250	383
1500	460
1750	537
2000	613
2175	667



Application Example



The SLN.300 saves design, build and installation cost by providing an all-in-one approach to guided lift applications. DADCO's SLN.300 Non-Rotating Nitrogen Gas Stock Lifters are well suited for progressive stamping tools. The lifters may be used in dies to support the material and facilitate continuous feed. The application illustrated above depicts eighteen SLN.300's as support lifters in a progressive stamping tool.